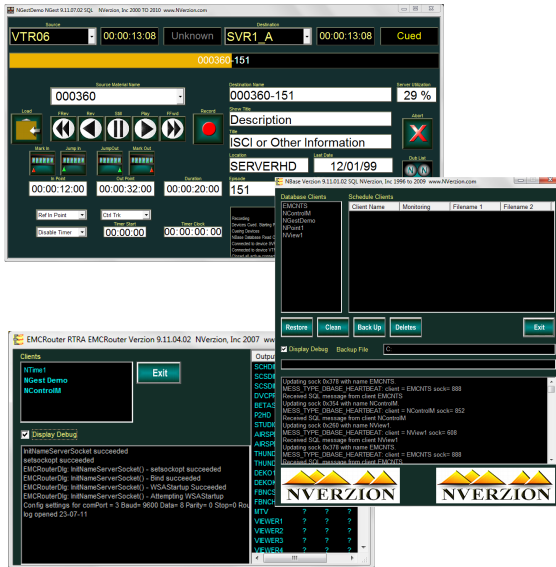


Software & Hardware Package

The NControl Software & Hardware package provides you with all the necessary automation tools to get your channel to air. The package includes two industrial rack mount PCs with eight Serial connections to NVerzion's Ethernet Machine Control (EMC) and EMC-R network-based router interface. These serial cables can be used to control up to seven video related devices (VTRs, Video Server ports, etc.) and a router interface.



The image shows a screenshot of the NView software interface displaying a table of media assets. The table has columns for Material ID, Parent Location, Description, Duration, ISCI Billing Info, Trim On Date, and Last Info.

Material ID	Parent Location	Description	Duration	ISCI Billing Info	Trim On Date	Last Info
462	XC3458	MENARDS	00:00:30:00	T10-2811	00:00:00:00	07/07/09
483	XC3366	POLIERANSTA	00:00:30:00	TBTU 700-10	00:00:00:00	07/06/09
484	XC3395	TACO JOHNS	00:00:15:00	TJ 1068	00:00:00:00	07/07/09
468	CentaurTest1	TEST_B title	00:00:29:29	Test & agency field	00:00:00:00	07/19/11
468	CentaurTest2	TEST_B title	00:00:29:29	Test & agency field	00:00:04:00	07/19/11
467	3PMAX1	ABCDEF GHIJKL	00:00:55:00	This is the ISCI	00:00:00:00	07/06/10
468	TRT100	City of Great Raz	00:29:28:10	Two and a Half Men	00:00:00:00	12/29/09
469	THM41	Whoo-hoo, a her	00:29:28:10	Two and a Half Men	00:00:00:00	04/19/10
469	THM40R	Can You Eat Hu	00:29:30:18	Two and a Half Men	00:00:00:00	12/15/09

Shown are examples of Ngest, NControl, NBase, EMC-R and NView applications

Package Includes

- Ngest - Dub-station software
 - Transfers frame-accurate content from one source to a record destination. Also supports backup devices
- NPoint - Preparation
 - Provides reviewing, segmenting, and trimming
- NControl - Playlist
 - Event playlist for a single video server output
- NBase-SQL - Media Database Manager
 - Maintains local database of server clips and tapes
 - Communicates changes between applications
- NView - Media Database Viewer
 - Operator can view, filter, sort, edit database fields
- EMC - Ethernet Machine Control and Router Control
 - Configurable control for up to 8 serial devices
- NCommand - Monitoring for up to 3 devices
 - Monitors devices and provides limited device control
- Computer System
 - 2RU rack mount chassis
 - Single Pentium processor, Windows XP Pro
 - 8-port PCI 422 serial card
 - Note: Keyboard, monitor, mouse are not included
- Includes 1 year of customer support and warranty

FAQs

- Can the system be tailored for a station's individual needs? Yes. The software architecture is designed to accept specific customer modifications.
- What is the maximum number of devices a system can expand to? Is the physical location of devices important? There is virtually no limitation on the number of devices OR on where they can be located.
- Is the system extensible? Yes. The package can be expanded to any number of dubbing channels, playout channels, archives, etc. Additional capabilities can also easily be added, such as centralcasting, dish control, and asset management.
- What kind of devices can this package control? The system uses VDCP to control video servers and is server agnostic. The system also supports a variety of tape machines. Optional controls can be added for more device control including routers and traffic interfaces.

